



Cyngor Castell-nedd Port Talbot
Neath Port Talbot Council

Community Safety & Substance Misuse





Cyngor Castell-nedd Port Talbot
Neath Port Talbot Council

Officers

- Claire Jones – Strategic Manager, Partnerships and Community Cohesion
- Elinor Wellington – Principal Officer for Community Safety
- Sarah Williams – Anti-Social Behaviour Reduction Coordinator
- Allyson Fisher – Senior Independent Domestic Violence Advisor
- Bethan Dennedy – Community Cohesion Officer
- Matthew Rafferty – Harm Reduction Lead
- Erica Barrett – Contract Monitoring and Performance Officer

South Wales Police Colleagues

- Superintendent Mark Brier
- Inspector Claire Morgan

Anti-Social Behaviour

Partnership Meetings

Neath Town Centre

- This working group has previously reported to scrutiny, to address the issues of ASB in the town centre area. Issues have improved and continue to be monitored with a follow up meeting being arranged for December.
- The position statement on work between Community Safety, Housing Options and South Wales Police has been made available to members.
- This work has fed into the Homelessness Task & Finish Group chaired by Cllr Peter Richards, also regularly raised at the Community Safety Partnership Board.



Anti-Social Behaviour

Partnership Meetings

- Partnership meetings were convened to address issues of ASB in the following areas;
 - Port Talbot Town Centre
 - Briton Ferry
 - GW Logs (GCG Area)
- Through positive partnership working and with local Cllr involvement these areas have seen marked improvements and positive outcomes.
- Local Cllrs are aware to raise any ongoing or re-emerging issues with the Community Safety Team



Anti-Social Behaviour

Partnership Meetings

The following partnership meetings are due to be convened to address emerging issues;

- **Wern Works, Briton Ferry** – An ongoing issue for various departments within the authority. A partnership meeting will be coordinated by Community Safety to look at a new action plan to address emerging issues re use of the premises, waste and fly tipping.
- **Taibach Workingmens Club** – Natural Resources Wales have been tasked to call a meeting to discuss this vacant premises and use by the owner. Various departments across the council are involved, with growing concerns re youths accessing an unsafe building and fire risks, particularly with it being close to the M4 overhead.



Anti-Social Behaviour

Youth Disengagement

- Community Safety are being alerted to issues of youth disengagement in various places across the borough.
- A new piece of work is due to commence with South Wales Police ASB Team, with approaches being made to the Youth Justice Early Intervention Service and NPT Youth Service.
- The work will consider different approaches to engaging with young people, particularly given the current covid restrictions.
- Cllrs will be kept informed of plans around this work, and we welcome any local intelligence or ideas that can be fed into this work



Anti-Social Behaviour

Street Vulnerable MARAC

- The Street Vulnerable MARAC meetings have mobilised during the Covid pandemic
- Over 40 vulnerable people have been discussed within this forum
- Partner buy-in remains excellent, with positive outcomes seen for those discussed
- Due to changes to homelessness legislation as a result of the Covid-19 pandemic, a lot of those who are discussed at SV MARAC are now accommodated
- Due to the level of their vulnerabilities and complex needs, they are still being discussed within this forum to ensure appropriate support is in place
- This work fits with the Neath Town Centre Partnership work and Homelessness Task & Finish Group



Domestic Abuse

NPT IDVA Service (Independent Domestic Violence Advisors)

- Despite an increase in demand on the IDVA Service due to the Covid-19 pandemic, the Service has been able to maintain a high standard of service provision and adapt working arrangement and practices.
- The successful appointment of two new full time IDVA's will ease the pressure internally, caused as a result of an increase in demand due and will create scope to further develop and enhance service provision.
- The role of NPT MARAC (Multi Agency Risk Assessment Conference) Coordinator has recently been filled. This is a function that NPTCBC took responsibility for in Aug 20. The role is pivotal to the effectiveness of the process.
- MARAC training has been arranged for all MARAC partners on 7.12.20. This training is jointly funded by SWP and NPTCBC as part of an ongoing review and evaluation of the current MARAC process within NPT.

Domestic Abuse

NPT IDVA Service (Independent Domestic Violence Advisors)

Recent Statistics

- **268** referrals for high-risk cases for the period April 20 to Oct 20.
- For that period **64%** engaged with the service – this was meaningful engagement where risk management and safety planning was implemented.
- **13%** are recorded where contact was made with the victim but IDVA input was declined
- **10%** where the Service was unable to establish direct contact despite robust attempts being made, in line with the services' intake policy.

- **335** children were linked to cases referred to the service - This has been picked up by the Leadership Group as specialist providers are reporting a decline in the number of children they support. The Leadership Group has tasked the CYP group to take this forward
- **284** high risk cases within the NPT MARAC (Multi Agency Risk Assessment Conference) in the period Apr 20 to Oct 20.

- Some noticeable trends being reviewed by the Service currently:
 - Increases in cases where pregnancy has been identified 4%
 - Increase in male victims up to 6%
 - Reduction in referrals of repeat/complex cases.



Domestic Abuse

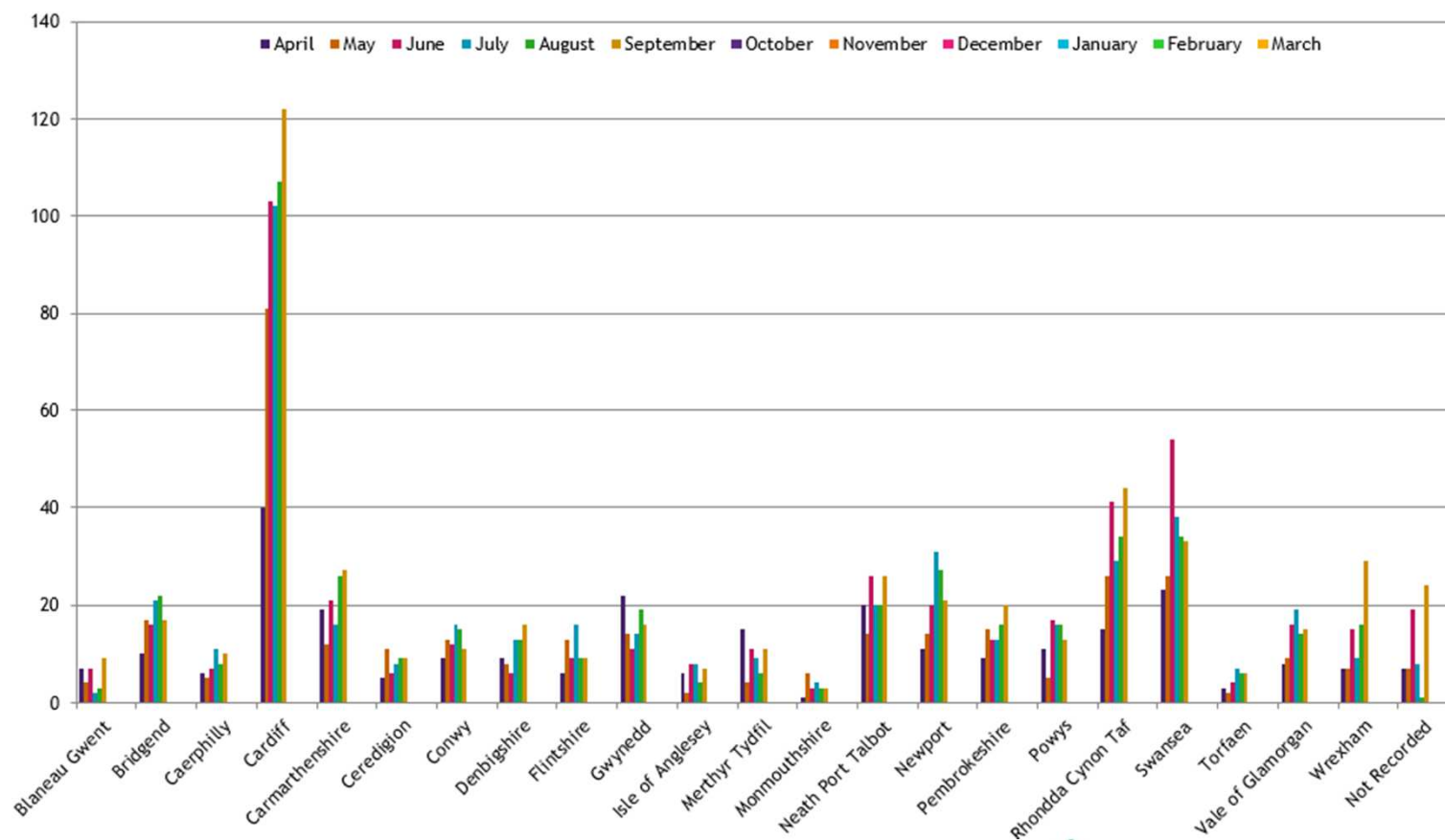
Working with Perpetrators

- We have recognised that much of our work as a partnership is victim focused, with not enough focus on providing perpetrators with the opportunity to change their behaviour.
- A roll out of the DRIVE perpetrator programme across Western Bay began in September 2020 . This is funded by the Police and Crime Commissioner.
- The programme is an intensive intervention that works with high-harm and serial perpetrators to challenge behaviours and reduce abuse.
- To coincide with this work, a Western Bay DRIVE IDVA has been recruited to work within the DRIVE team.

Community Cohesion – Hate Crime

Provided by Victim Support

Local Authority Breakdown - Rolling Months



Community Cohesion – Hate Crime

Provided by Victim Support

	Disability	Gender Identity (Trans)	Race	Religion	Sexual Orientation	Other	Unknown
Blaenau Gwent	1	-	-	-	-	-	-
Bridgend	3	1	4	-	3	-	-
Caerphilly	1	1	10	-	3	-	-
Cardiff	8	1	69	2	15	-	3
Carmarthenshire	3	2	16	-	7	-	-
Ceredigion	-	1	5	1	2	1	1
Conwy	-	-	3	-	1	-	2
Denbighshire	3	-	4	-	2	-	-
Flintshire	-	3	6	-	-	-	-
Gwynedd	1	-	6	-	1	-	-
Isle of Anglesey	1	-	2	-	-	-	-
Merthyr Tydfil	2	-	5	-	1	-	-
Monmouthshire	1	-	4	-	-	-	-
Neath Port Talbot	2	-	9	-	1	-	1
Newport	1	-	19	-	3	-	-
Pembrokeshire	2	-	8	-	4	-	-
Powys	-	-	14	1	1	-	-
Rhondda Cynon Taf	3	1	14	-	6	-	-
Swansea	2	1	17	1	3	-	-
Torfaen	-	-	4	1	2	-	-
Vale of Glamorgan	3	-	15	1	2	-	-
Wrexham	2	-	10	1	-	-	-
Not Recorded	-	2	8	-	3	-	1

Community Cohesion – Hate Crime

- Close working partnership with Hate Crime Officer
- Hate Crime Awareness Week 2020 - 10th to 17th October.
 - Online Launch Event on 10th October
 - Webinar with Arti Shah 12th October
 - Promoted Community Champion Hate Crime Training
- Monthly Trans Drop-in (online)
- Staff Training – Hate Crime Awareness provided by Victim Support

Substance Misuse

NB – information reported about the work of the APB will be regional (NPT and Swansea).

New Service Model

- The APB and the NPT and Swansea Public Service Boards have agreed that a co-operative Public Health model for Substance Misuse is to be developed across Western Bay.
- A Public Health approach to the prevention of and treatment for substance misuse promotes full integration with all the relevant service sectors, recognising that supporting the ‘whole’ individual.
- This will mean the development of a co-operative model – a community-based, multi-disciplinary and multi-sectoral collaborative programme and framework – The Alliance Programme.

Substance Misuse

Covid

How services have adapted

- WCADA and Barod have kept our specialist needle exchanges open all throughout the lockdown.
- Services developed digital Referrals & Assessments received and facilitated by phone or text and What's App.
- Ensured that there is daily contact with vulnerable young people.
- Created special resources to help people manage different situations.
- Running group sessions on-line and chat facilities to be able to work virtually.
- Prescribing services have ensured patients can pick up their medication by offering a delivery service and by working with them to set up a suitable other system and by reducing the number of times they need to pick up.

Substance Misuse

Covid

Effect on service levels

There has been an increase in the number of referrals to structured treatment services for Q2 (517n.) as compared to the same period last year (Q2 19/20: 465n; 11%) and the previous quarter (Q1 20/21: 368n.29%). Reasons attributed to this by Providers are that:

- People were not asking for help during the early days of the pandemic, as they wanted to wait until the pandemic passed.
- More people not having to go to work
- Anxiety about the pandemic
- Reduced access to social, leisure and recreational opportunities.
- Referrals to CYP services in Swansea have increased due to improved promotion and awareness raising during lockdown.

Substance Misuse

Service development

Contract Monitoring

- The contract monitoring arrangements continue to be effective in identifying issues with service delivery as well as how they can be resolved. The following changes have been proposed:
 - To extend the Low Threshold Prescribing via PSALT for a time limited period to include medication costs
 - To amend the Platform Counselling service contract to reduce funding to bring in line with actual service delivery in the region.
- Rapid Access Prescribing Service
 - This new service commenced in April and offers quick access (within a week) to prescribing for those service users who are high risk. The service provides an additional 30 places for those meeting the criteria.
- Contract monitoring identified an issue with the current routes into services. A strategic evaluation was carried out. Proposals to improve the speed and means of accessing services have been agreed and are being worked up.
- The development of new performance framework has been agreed and a dashboard of measures will be introduced in the new financial year.

Substance Misuse

Harm Reduction and Overdoses

Take Home Naloxone Programme

- Comparing quarter 1 with quarter 2 shows that there were 48 less kits given out in quarter 2.
- SWP have agreed to carry nasal naloxone on a voluntary basis, Initially Covid impacted the roll out of this project however it is now progressing.
- Outreach workers were delivering kits and there are postal kits available on request
- Workers at the Ambassador have been trained in Naloxone

Needle Exchange

- There has been between a 40-50% decrease across the region in exchange. Data shows that the reduction is mainly in steroid users.
- The fall in transactions has mainly seen in pharmacies. Ongoing work with the primary care lead to improve engagement and to extend services where there is need and reduce where activity is low.
- Our specialist providers continue to operate at consistent level.

Substance Misuse

Harm Reduction and Overdoses

Drug Poisoning Task Force

- Reviews all drug poisonings and provides intervention and support to those that have had a non-fatal drug overdose.
- New policies and procedures have been developed that allows the Task Force to deliver better outcomes.
- There has been a big push in increasing the notifications of Non-Fatal and Fatal drug poisonings.
- As a result of an increase in notifications the 72 hour protocol was developed to ensure cases that are sent to outreach services are reviewed within 72 hours upon outreach receiving the notification.
- There has been a decrease in drug related deaths for 2019. The recent ONS reports shows a 30% reduction in cases within the Swansea area and a 77% decrease of cases within the Neath Port Talbot area.



Cyngor Castell-nedd Port Talbot
Neath Port Talbot Council



Thank You. Any Questions?

www.npt.gov.uk